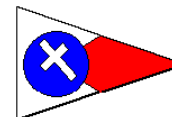


# SANTA CRUZ YACHT CLUB



## SAILING INSTRUCTIONS

244 Fourth Avenue, Santa Cruz, CA 95062, (831) 425-0690, fax (831) 425-7032, info@scyc.org

### 2008 SPRING SCORE/ DOUBLE HANDED SERIES

#### 1. Rules

This series will be governed by the rules as defined in the *Racing Rules of Sailing*, the 2008 SCYC Minimum Equipment Requirements (MER) as they apply to category 3 races for PHRF and category 4 races for Double Handed division.

US Sailing prescription to RRS 75.3 shall not apply.

RRS rule 40.1 is changed to read: Competitors shall wear adequate US Coast Guard Approved life jackets. Wet suits and dry suits are not adequate personal buoyancy. The Y flag will not be displayed. Every boat shall carry life-saving equipment conforming to government regulations.

RRS 62.1 is changed as per Sailing Instruction 7.

RRS 35 is changed as per Sailing Instruction 9.

RRS A2 is changed as per Sailing Instruction 10.

#### 2. Entries and Eligibility

Eligible boats may register by completing the 2008 SCYC Entry Form and presenting it, together with the required entry fee to the race committee between 1000 hours and 1025 hours on Sunday, April 27, 2008 at the SCYC Clubhouse.

#### 3. Notices to Competitors, Signals made ashore

Notices to competitors will be posted on the SCYC Official Notice Board, located in the window opposite the bar at the northeast corner of the SCYC clubhouse.

Signals made ashore will be displayed from the yardarm of the mast on the SCYC clubhouse deck.

Changes to the Sailing Instructions will be posted not later than 1130 hrs, on the day they take effect, except that any change to the schedule of races will be posted by 1800 hrs, on the day before it takes effect.

Before starting the day's racing each boat shall sail on starboard tack past the stern of the Race Committee Signal Boat prior to the warning signal and hail her sail number.

The Race Committee will use VHF 68 for communication.

#### 4. Schedules and Class Flags

Two races are scheduled each of the following race days:

Sunday, April 27, 2008	Sunday, May 25, 2008	Sunday, June 29, 2008
------------------------	----------------------	-----------------------

The first Warning signal is at 1225hrs.

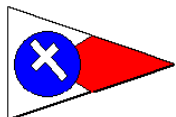
The second race for each division will follow shortly after the last finish in each division or after the expiration of the time limit.

Division	MBYRA PHRF Rating Band	Class Letter & Flag
A – Spinnaker	90 or below	F
B – Spinnaker	Above 91	E
DH – Double Handed	All PHRF	D
Multihull		G

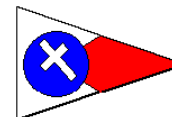
#### 5. Courses, Race Area

Course numbers will be signaled with a numeral pennant from the RC boat. Courses are described in appendix A.

The attached chart in Appendix A shows the racing area.



# SANTA CRUZ YACHT CLUB



## SAILING INSTRUCTIONS

244 Fourth Avenue, Santa Cruz, CA 95062, (831) 425-0690, fax (831) 425-7032, info@scyc.org

### 6. Marks

Name	Description	Latitude	Longitude
S/F	Unmarked yellow ball	N36 Deg - 57.11Min	W121 Deg - 59.77 Min
NB	Unmarked yellow ball	N36 Deg - 56.59 Min	W122 Deg - 03.67 Min
Wharf	Unmarked yellow ball	N36 Deg - 56.87 Min	W122 Deg - 01.21 Min
Gov	Unmarked white/ blue ball	N36 Deg - 57.47 Min	W122 Deg - 00.72 Min
Mile	Red/White whistle buoy marked: SC A	N36 Deg - 56.38 Min	W122 Deg - 00.58 Min
Black	Unmarked yellow ball	N36 Deg - 57.33 Min	W121 Deg - 59.25 Min
SC2	Yellow cylinder marked SC 2	N36 Deg - 56.52 Min	W121 Deg - 59.30 Min
SC3	Yellow cylinder marked SC 3	N36 Deg - 56.50 Min	W121 Deg - 58.00 Min
SC5	Yellow cylinder marked SC 5	N36 Deg - 55.00 Min	W122 Deg - 00.00 Min
SC7	Not on station (check notice board)	N36 Deg - 56.79 Min	W122 Deg - 01.66 Min
W	Inflatable Orange Tetrahedron		
L	Inflatable Yellow Tetrahedron		

### 7. The Starting and Finishing Lines,

The starting line will be between a staff displaying a RC flag on the starboard end race committee signal boat and mark S/F on the port end.

The finish line will be between a staff displaying a RC flag on a committee signal boat and mark S/F. An orange ball may replace the committee boat if the RC boat is not on station.

After the starting signal, the race committee may hail the sail number(s) of the boat(s) identified on the course side of the starting line by loud hailer and/or VHF radio. The failure of a hail, the failure of a boat to hear a hail or the order of the hails shall not be ground for redress. This alters RRS 62.1

Between a boat's preparatory signal and her start, she shall not hoist any part of her spinnaker higher than the main-boom gooseneck.

### 8. Boat retiring before the finish

A boat retiring before finishing a race shall notify the RC as soon as reasonably possible.

### 9. Time Limit

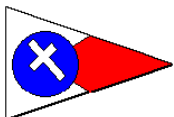
Boats having not finished within 30 minutes of the first boat in her class to sail the course and finish will be scored DNF. This alters rules 35.

### 10. Scoring

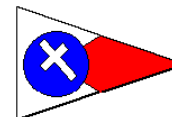
A total of six (6) races are scheduled for the series.

A minimum of four races constitutes a series.

When fewer than four races are completed, a boat's series score will be the total of her race scores. When five or more races are completed, a boat's series score will be the total of her race scores excluding her worst score. This changes RRS Appendix A2.



## SANTA CRUZ YACHT CLUB



### SAILING INSTRUCTIONS

244 Fourth Avenue, Santa Cruz, CA 95062, (831) 425-0690, fax (831) 425-7032, info@scyc.org

#### **11. Protest**

Protests and requests for redress shall be written on Standard US Sailing protest forms. Protest forms are available at the SCYC clubhouse or race committee regatta shed.

The protest time period will be sixty minutes. Protest start time and protest end time, will be posted on the SCYC official notice board.

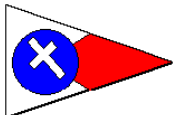
Protests and requests for redress shall be lodged with the on-duty club employee or Race Committee representative within the protest time limit.

The time and place of all protest hearing(s), the boat(s) protesting, boat(s) being protested and boat(s) requesting redress will be posted on the SCYC Official Notice Board. It is the competitor's responsibility to check the SCYC Official Notice Board. This serves as notification per RRS 63.2.

#### **12. Prizes**

Prizes will be given after racing on Sunday June 28 2008. Prizes will be based on class participation.

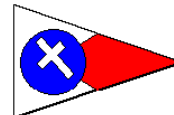
Divisions with less than 3 boats entered in the series will not be eligible for prizes or the Champion of Champions Regatta.



# SANTA CRUZ YACHT CLUB

## SAILING INSTRUCTIONS

244 Fourth Avenue, Santa Cruz, CA 95062, (831) 425-0690, fax (831) 425-7032, info@scyc.org



### APPENDIX A – RACE AREA & COURSES

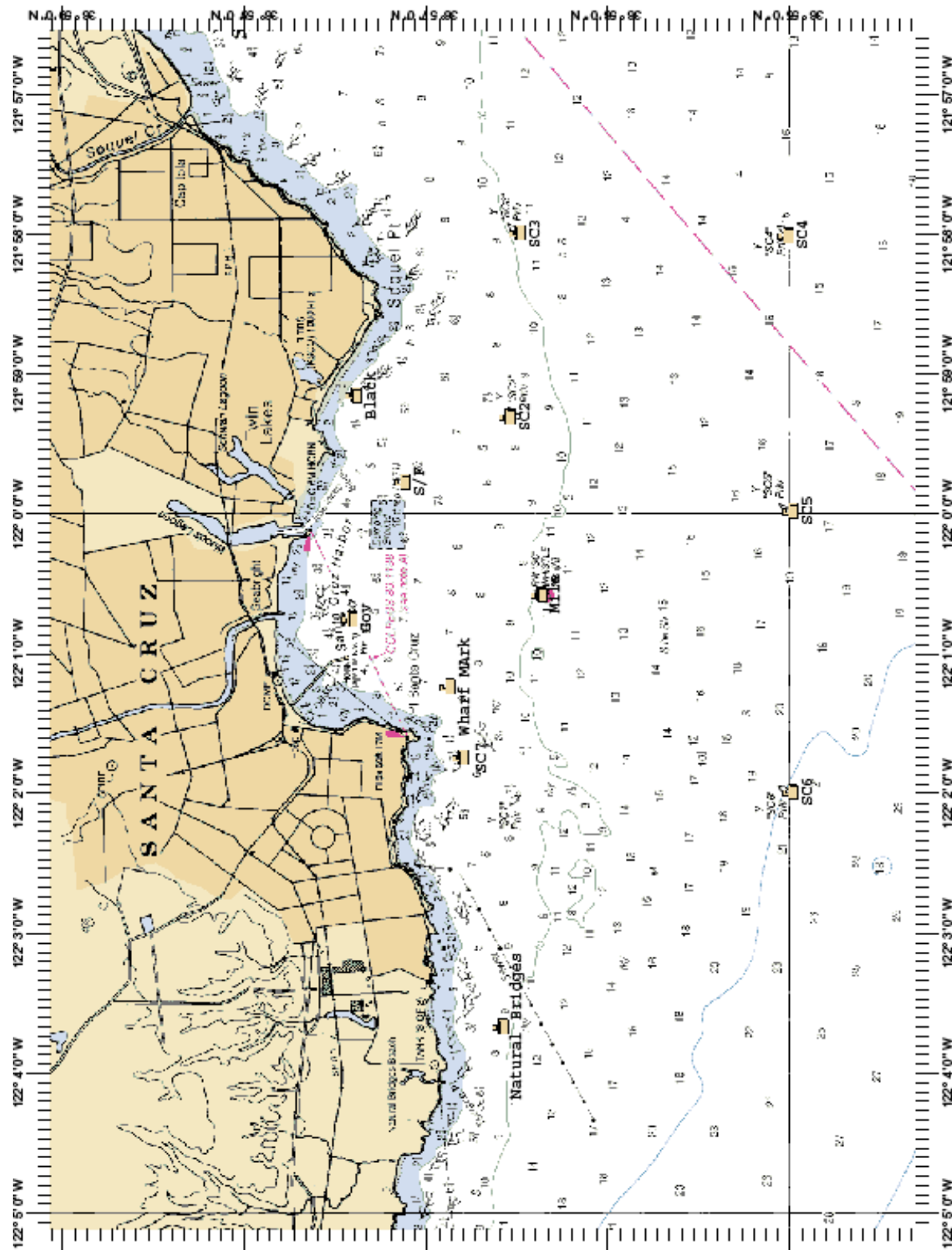
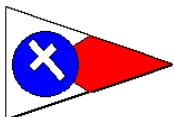
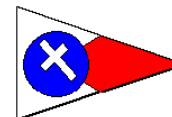


Chart Name: MONTEREY BAY  
 Chart ID: 16665.1  
 Top Left: 36° 50' 4" N 122° 5' 6" W  
 Bottom Right: 36° 54' 18" N 121° 56' 32" W

© MAPTECH, INC.



# SANTA CRUZ YACHT CLUB



## SAILING INSTRUCTIONS

244 Fourth Avenue, Santa Cruz, CA 95062, (831) 425-0690, fax (831) 425-7032, info@scyc.org

### COURSES

p indicates a port rounding, s indicates starboard rounding

<b>Division A</b>		
<b>Course Number</b>	<b>Rounding Order</b>	<b>Distance nm</b>
1	Start – SC7 p – Black p – SC7 p – Finish	7.3
2	Start – NB p – Finish	6.3
3	Start – SC7 p – Mile p – SC3 p – Finish	6.11
4	Start – SC5 p – Black p - SC2 p - Finish	6.2
5	Start – SC3 p – Gov p – SC2 p - Finish	6.1
6	Start – SC3 p – Gov p – Finish	4.8
7	Start – W p – L p – W p – Finish	
<b>Division B &amp; Multihull</b>		
<b>Course Number</b>	<b>Rounding Order</b>	<b>Distance nm</b>
1	Start – SC7 p – Black p – Wharf p – Finish	7.2
2	Start – NB p – Finish	6.3
3	Start – Wharf p – Mile p – SC3 p - Finish	5.5
4	Start – SC5 p – Finish	4.2
5	Start – SC3 p – Gov p – SC2 p - Finish	6.1
6	Start – SC3 p – Gov p – Finish	4.8
7	Start – W p – S/F p – W p – Finish	
<b>Double Handed</b>		
<b>Course Number</b>	<b>Rounding Order</b>	<b>Distance nm</b>
1	Start –Wharf p – Black p – Wharf p – Finish	5.7
2	Start – SC7 p – Finish	4.2
3	Start –Wharf p – Mile p – Black p – Finish	3.9
4	Start – Mile p –Black p – SC2 p - Finish	4.1
5	Start – SC3 p – Finish	3.1
6	Start – SC2 s – Gov p – Finish	3.0
7	Start – W p – Finish	